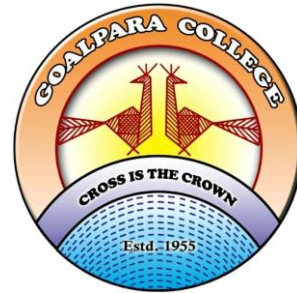


Types of Insect Antenna

Paper title: Biology of Insects, **Paper Code:** ZOO-HE-6016

& Paper title: Insects, Vectors and Disease, **Paper Code:** ZOO-RE-6026



Dr. Jugabrat Das

Assistant Professor, Department of Zoology

Goalpara College, Goalpara

- **Setaceous: (Bristle like)** Size of the segments decreases from base to apex. e.g. Leafhopper, Dragonfly, Damselfly.



Setaceous

- **Filiform: (Thread like)** Segments are usually cylindrical. Thickness of segments remains same throughout. e.g. Grasshopper.



Filiform

- **Moniliform: (Bead ed)** Segments are either globular or spherical with prominent constriction in between e.g. Termite.



Moniliform

- **Serrate: (Saw like)**
Segments have short
triangular projections
on one side. e.g.
Longicorn beetle



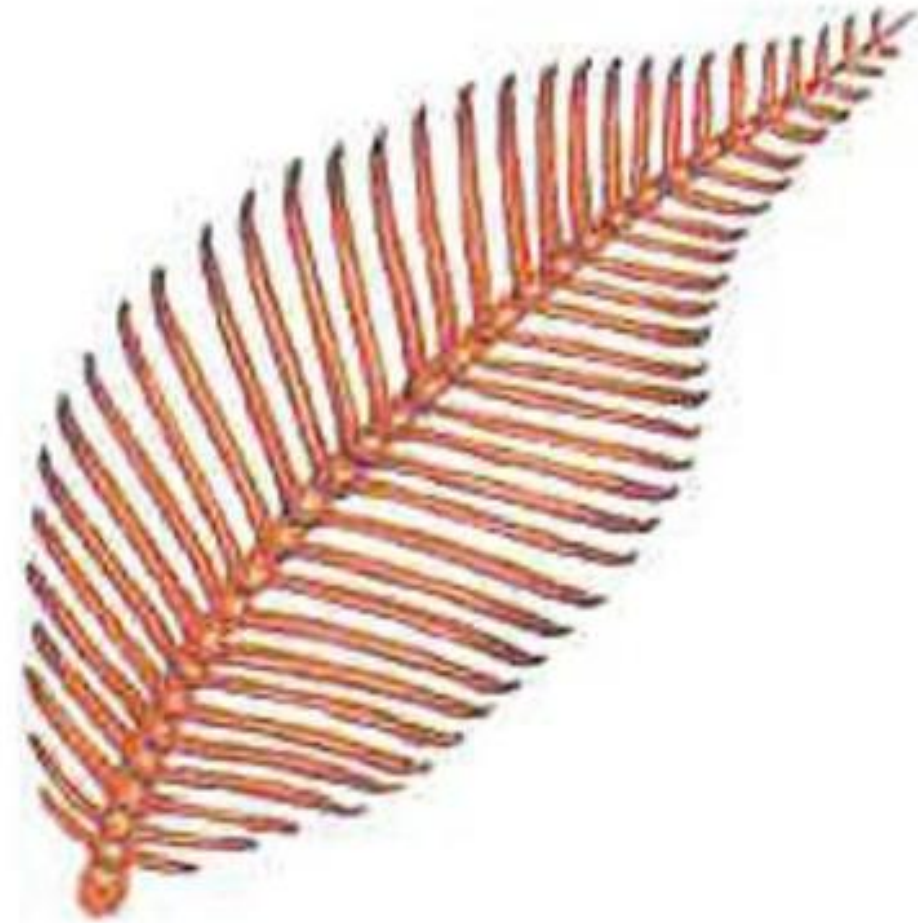
Serrate

- **Unipectinate: (Comb like)** Segments with long slender processes on one side e.g. Sawfly



Pectinate

- **Bipectinate: (Double comb like)** Segments with long slender lateral processes on both the sides e.g. Silkworm moth



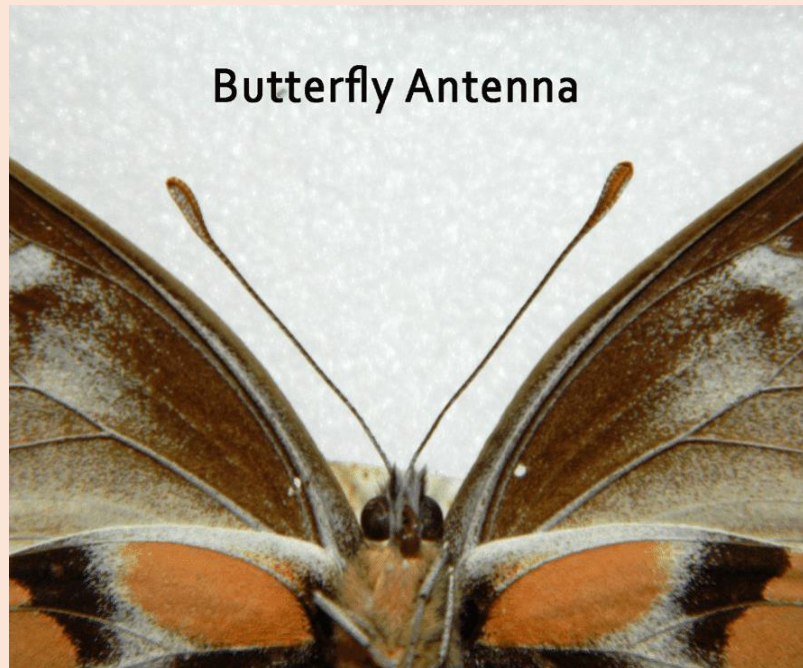
- **Clavate: (Clubbed)**
Antenna enlarges gradually towards the tip. e.g. Blister beetle



Clavate

- **Capitate: (Knobbed)**

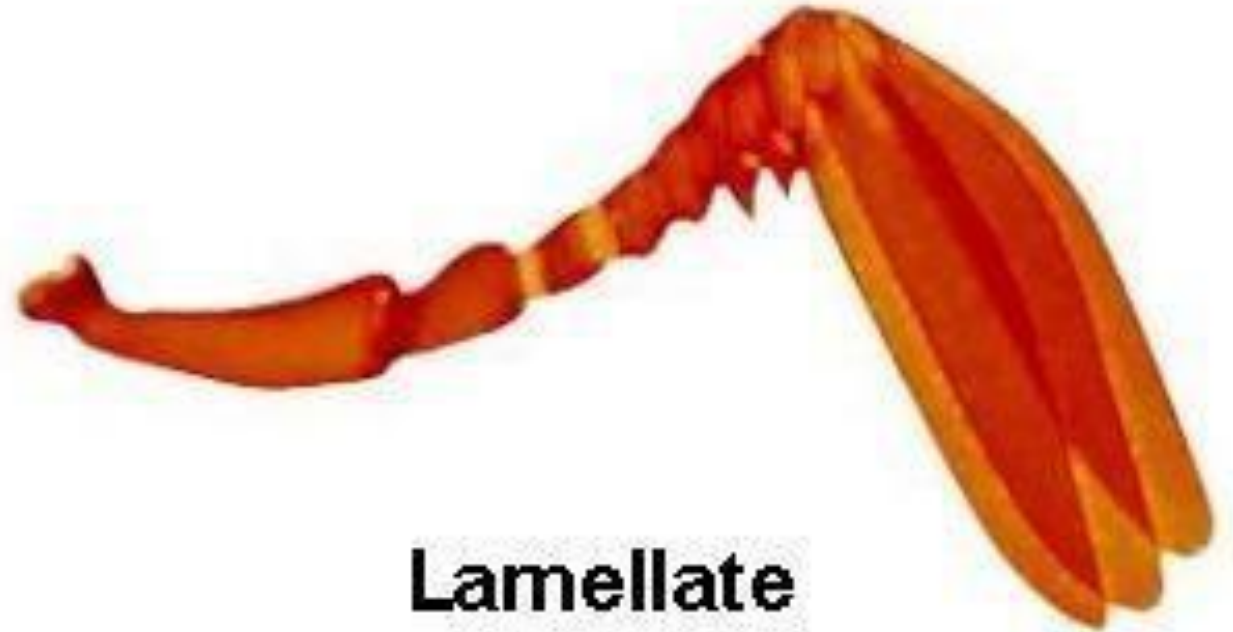
Terminal segments become enlarged suddenly e.g. butterfly



Capitate

- **Lamellate: (Plate like)**

Antennal tip is expanded laterally on one side to form flat plates e.g. lamellicorn beetle



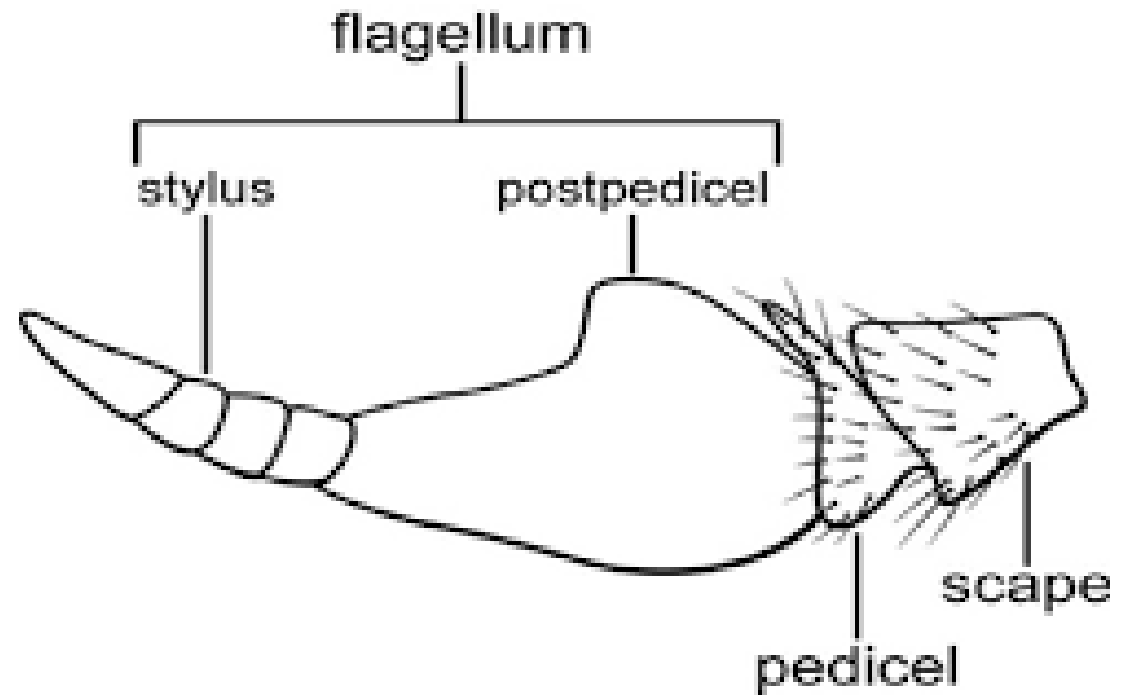
Lamellate

- **Aristate:** The terminal segment is enlarged. It bears a conspicuous dorsal bristle called arista e.g. House fly

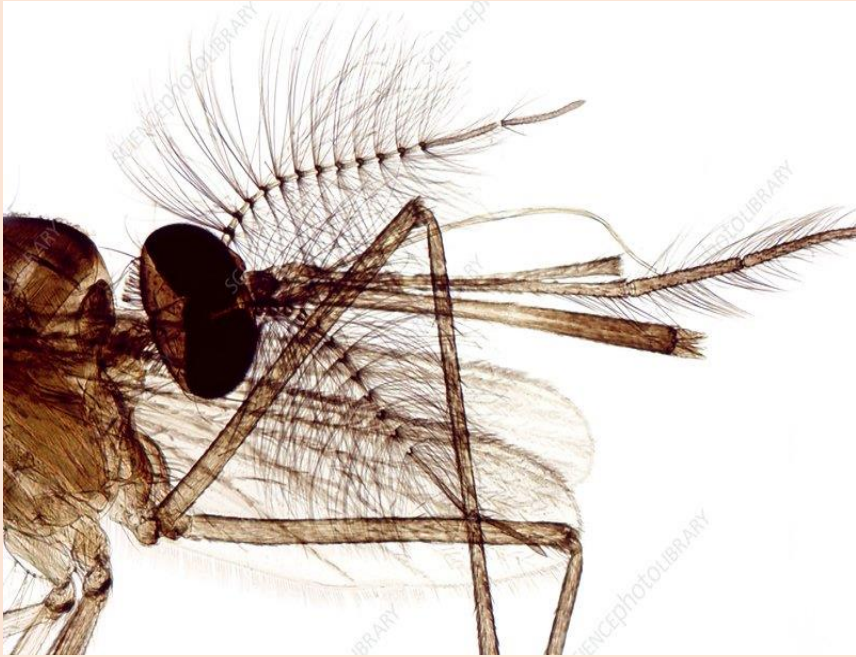


Aristate

- **Stylate:** Terminal segment bear a style like process e.g. Horse fly, Robber fly.



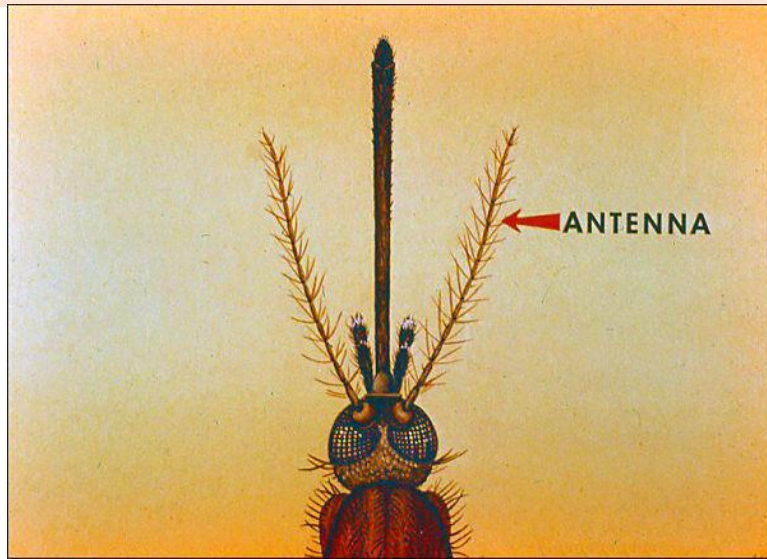
- **Plumose: (Feathery)**
Segments with long whorls of hairs e.g. male mosquito



Plumose

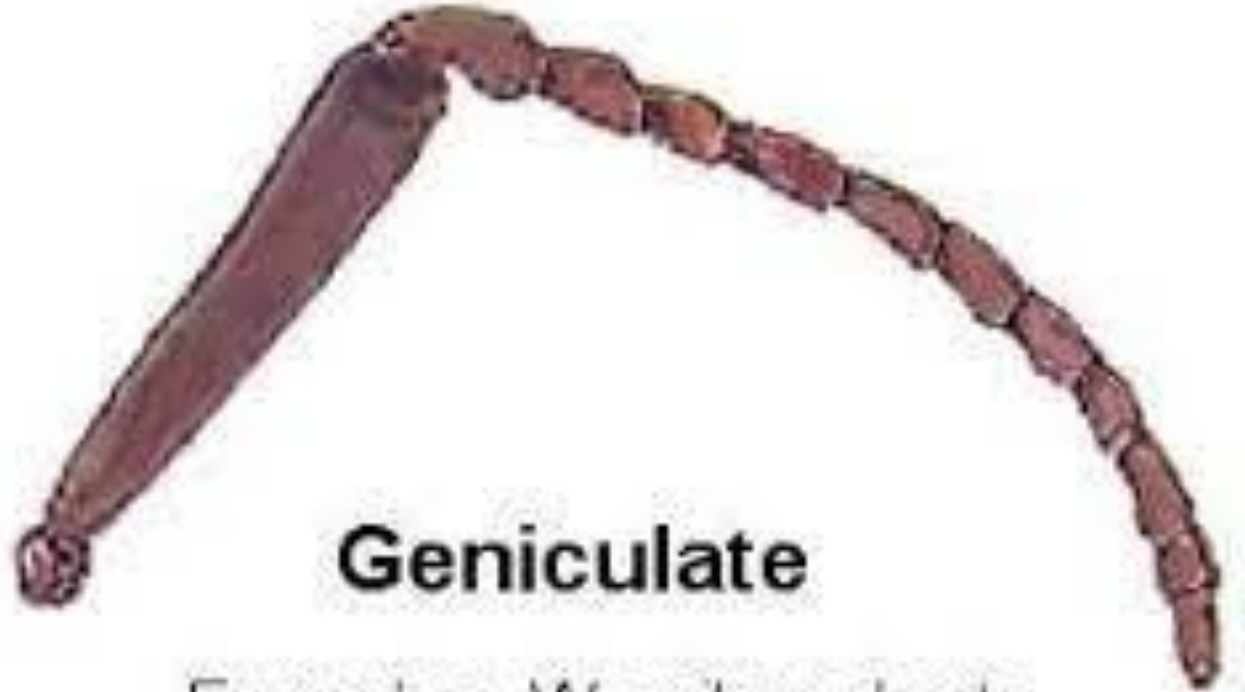
- **Pilose: (Hairy)**

Antenna is less feathery with few hairs at the junction of flagellomeres. e.g. Female mosquito.



- **Geniculate: (Elbowed)**

Scape is long remaining segments are small and are arranged at an angle to the first resembling an elbow joint. e.g. Ant, weevil and honey bee.



Geniculate

Examples: Weevils and ants

Thank You

Reference: <https://ecoursesonline.iasri.res.in/>